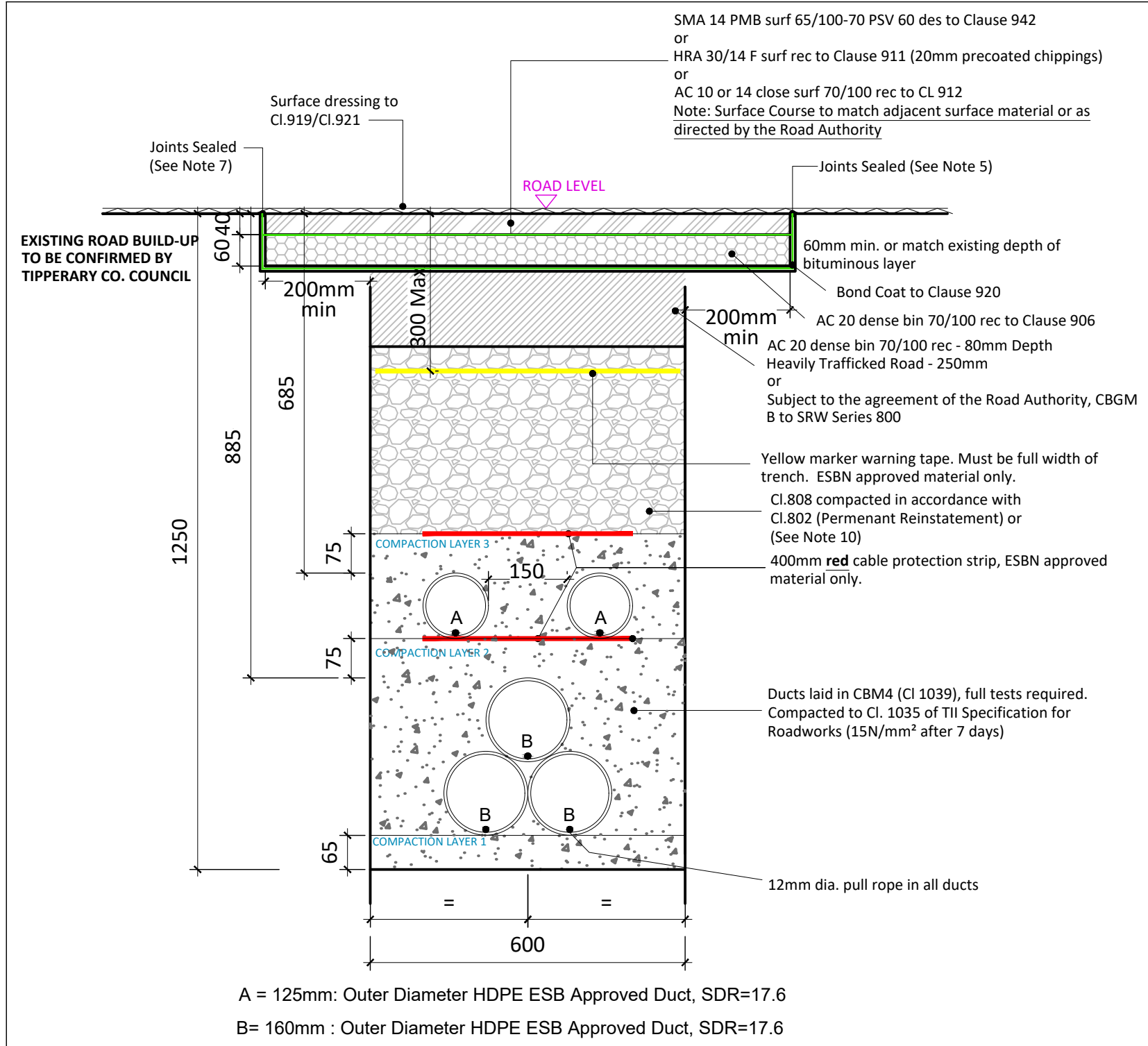
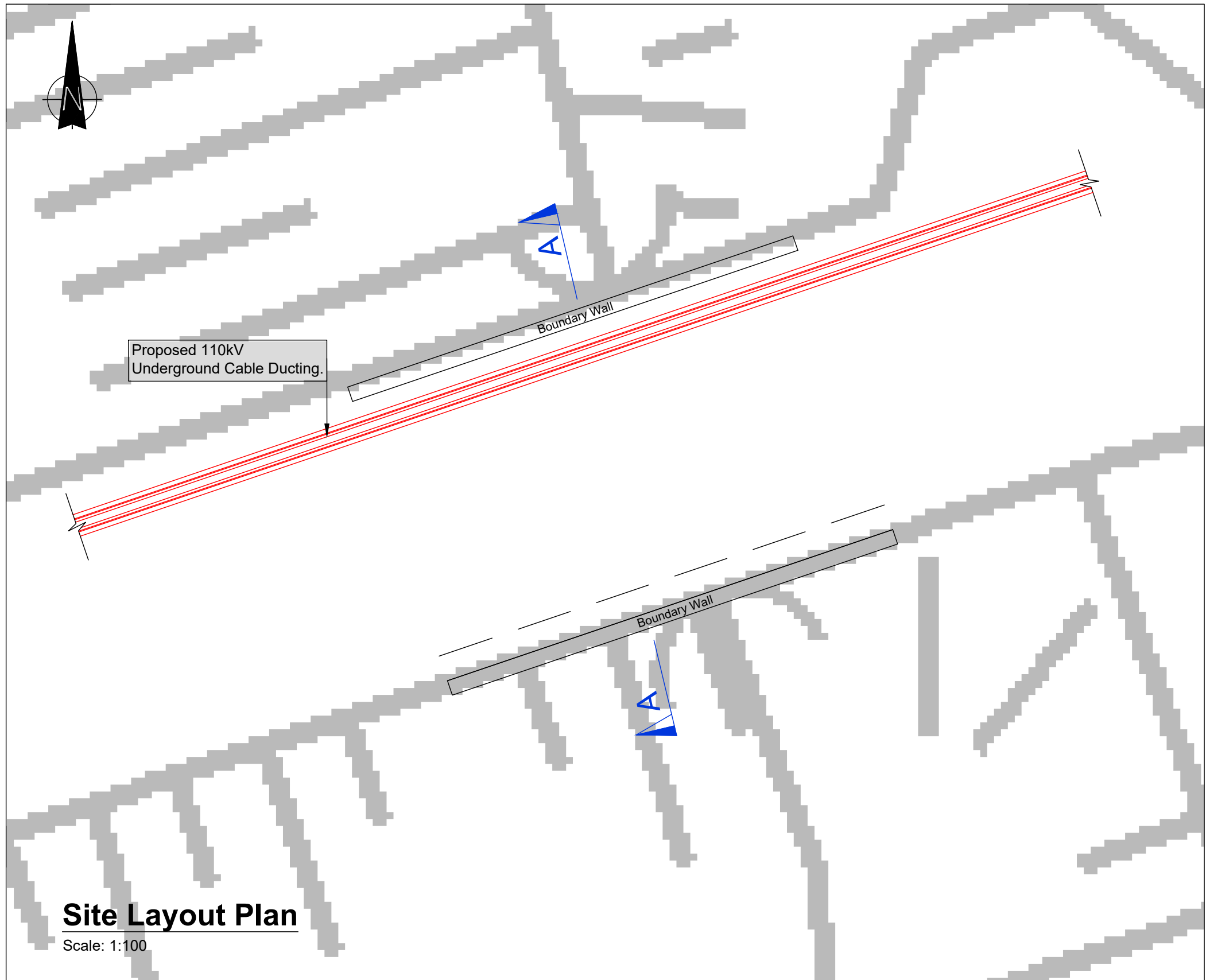


ISO A1 594mm x 841mm

Project Management Initials: Designer: Checked: Approved:

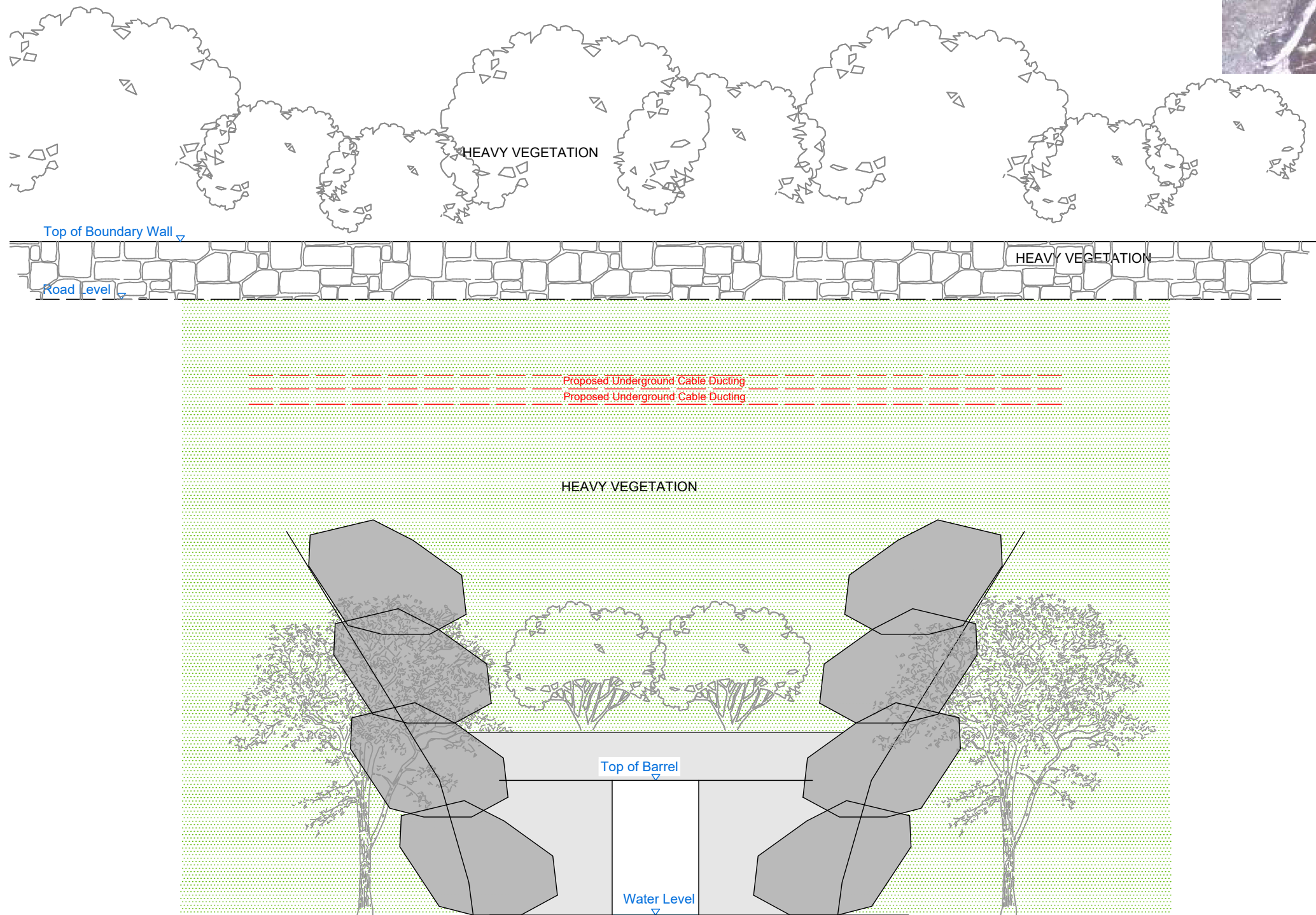
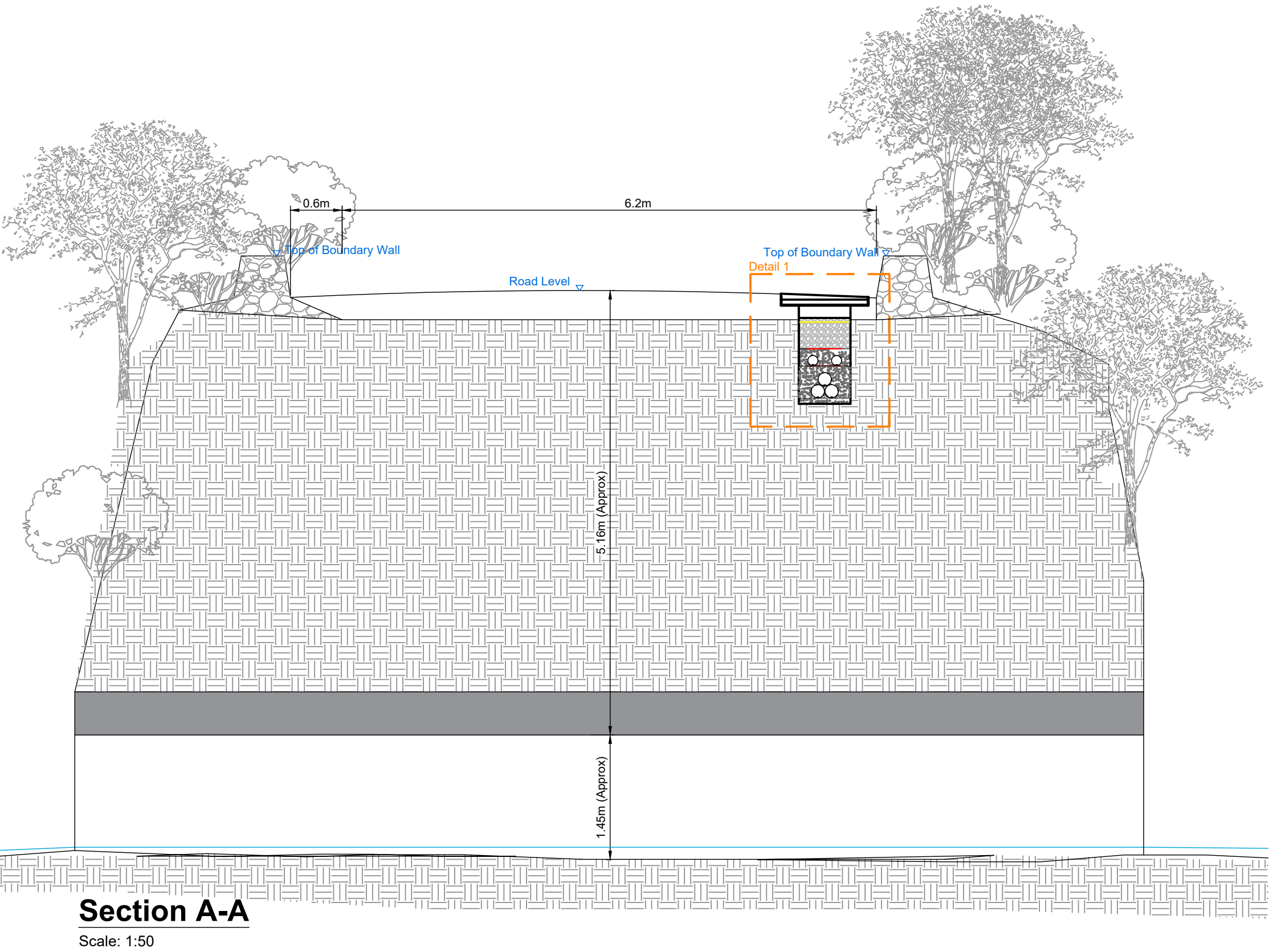
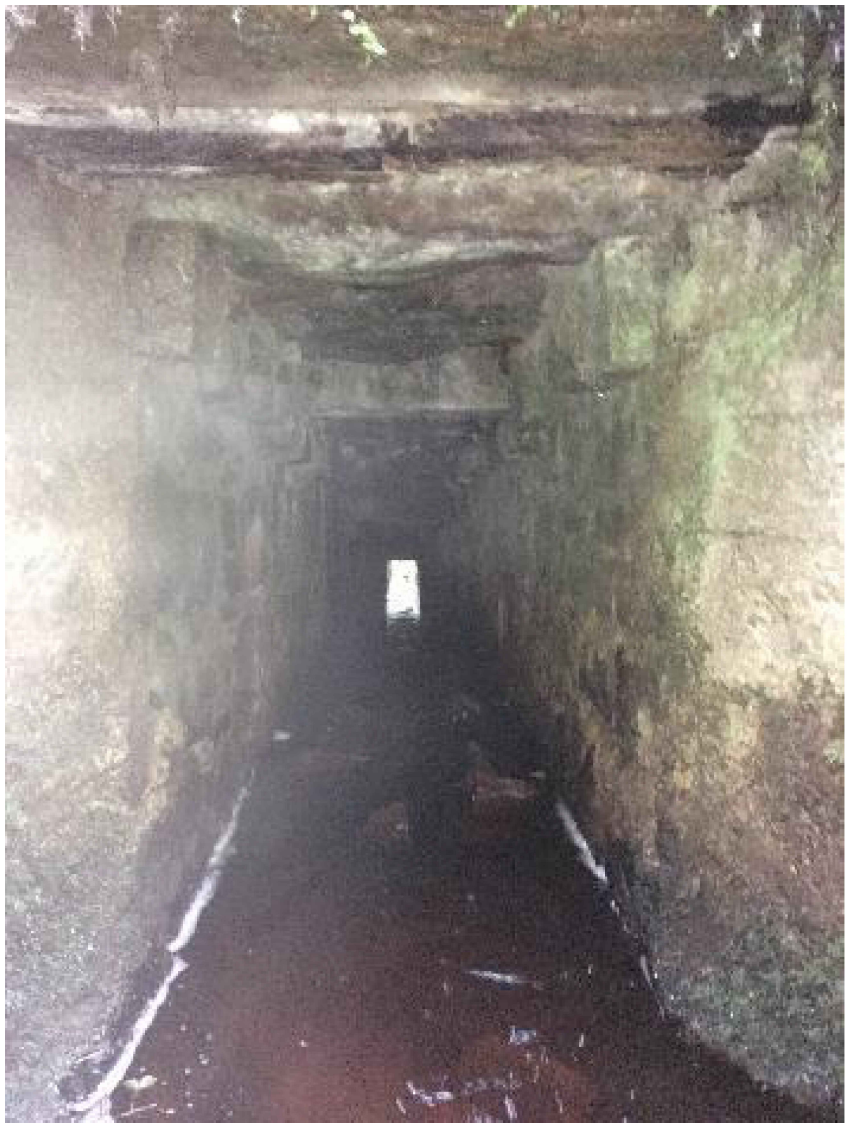
TLI Group Bridge Ref: Bridge 8  
Watercrossing Ref: W29.



Detail 1- Proposed 110kV UG Cable Ducts in Trefoil Formation Crossing Bridge

Scale: 1:10

- Notes:
1. This drawing is to be used only for the purpose of the planning application and is subject to detailed design.
  2. This drawing is to be read in conjunction with all other relevant information.
  3. Do not scale from this drawing, use only printed dimensions.
  4. All dimensions are in millimetres. All chainages, levels and coordinates are in metres unless defined otherwise.
  5. The existing utility service information shown on this plan is a general guide and the accuracy thereof cannot be guaranteed. no liability is accepted for any discrepancy, omission or deviation and the actual position of individual services must be verified and established on site before commencing the works.
  6. No excavation shall commence until the contractor has consulted up to date services drawings and carried out an electromagnetic locator (eml) scan.
  7. Hand dig only within 500mm of existing services.
  8. All co-ordinates are referenced to ITM.
  9. Drawings are in compliance with ESNB specification requirements for shallow formation, bridge crossings, etc.



Bridge Elevation

Scale: 1:50



Head Office  
Beenreigh,  
Abbeydorney,  
Tralee, Co. Kerry  
Ireland  
Tel: 00353 66 7135710

Regional Office  
Basepoint Business Centre  
Stroudley Road, Basingstoke,  
Hampshire,  
RG24 8UP, UK  
Tel: 00 44 1256406664

PROJECT

110kV Underground Cabling  
for Upperchurch Wind Farm  
Grid Connection

CLIENT



CONSULTANTS

NOTES: -

LEGEND: -

Proposed 110kV Underground Cable

ISSUE/REVISION

04	17.07.19	Issued for Planning
03	11.07.19	Issued for Planning
02	25.06.19	Issued for Planning
01	12.03.19	Issued for Planning
00	06.03.19	Issued for Information
I/R	DATE	DESCRIPTION

PROJECT NUMBER

05-652

SHEET TITLE

Bridge 8 (W29).  
Crossing Details

SHEET NUMBER

05652-522